



Exhibition Convenor  
**Lesley Clugston**

Judges  
**Judy Campbell**  
**Kerry Moore**



1.1 Small Quilts: Amateur

1<sup>st</sup> place

**Pam Mees**

**Blue Wren**

36 cm x 41 cm

Copyright acknowledgement:  
Helen Godden design

Quilt was painted and quilted by  
myself, according to class  
instructions given on-line by Helen  
Godden.



## 1.2 Small Quilts: Professional

1<sup>st</sup> place and

Best domestic machine quilting  
award

**Jocelyne Leath**

**True Vision**

50 cm x 50 cm

To truly see and understand what we are looking at is a gift. Wolves depend on the co-operation of the pack for survival. Work together, play together, respect their wisdom.



## 1.2 Small Quilts: Professional

2<sup>nd</sup> place

**Tracey Bareli**

**Kununulling Pub Ruins**

53 cm x 39 cm

Original design using Phil Thomas's Techniques. Photo from private collection. Kununulling Pub Ruins east of Coolgardie, WA Goldfields.



## 1.2 Small Quilts: Professional

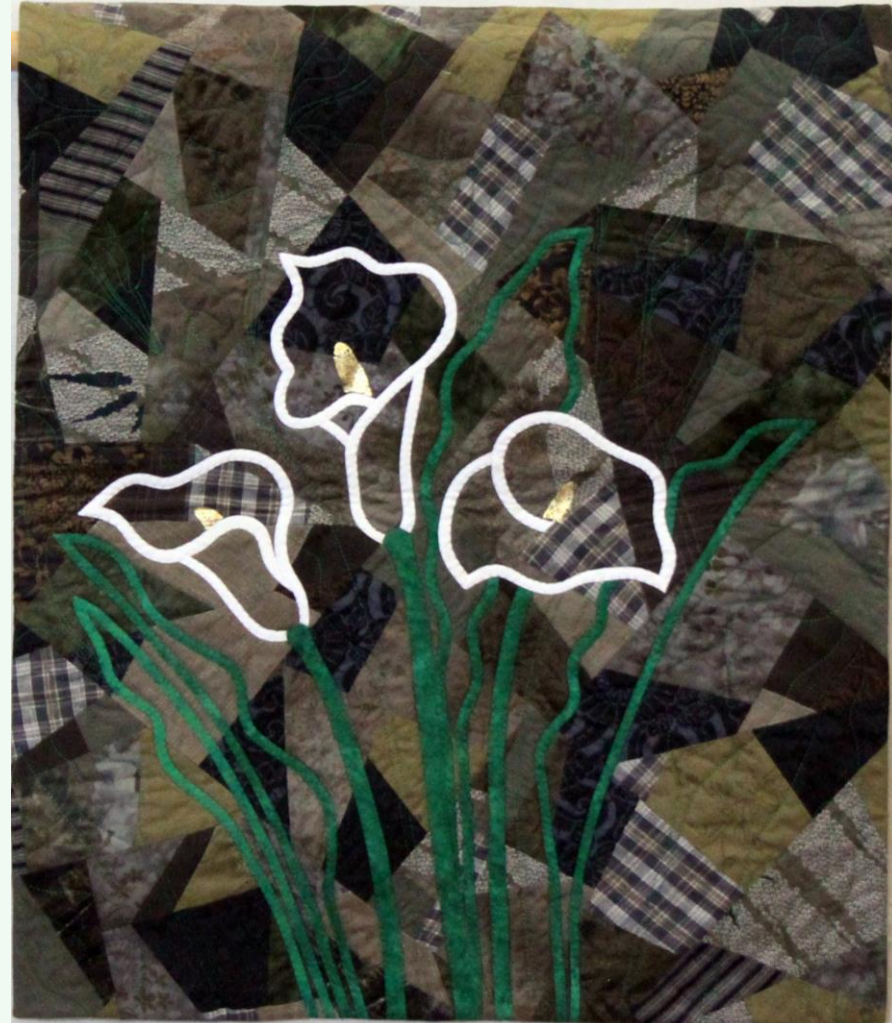
Equal 3<sup>rd</sup> place

**Meg Cowey**

**Beautiful Invader**

55 cm x 66 cm

Spreading via waterways throughout the SW, exotic Calla Lily is a declared pest and a threat to native flora and fauna. On the forest understory, the flowers glow like candles.



## 1.2 Small Quilts: Professional

Equal 3<sup>rd</sup> place

**Lana Lefroy**

**Whispering Woods**

58 cm x 84 cm

Made for my sister with various embroidery techniques, including beading and fishing line applique, on a wool/silk back ground. Such fun!



## 1.2 Small Quilts: Professional

**Debra Costarella**

**Featherweight**

80 cm x 64 cm

Copyright acknowledgement:  
Laura Heine design

Featherweight is a Laura Heine design I did in a class with Kraft Daze. A great way to create using different products to enable a visual finish with applique.



## 1.2 Small Quilts: Professional

**Elizabeth Humphreys**

**Fairy Martins and Parakeelya**

80 cm x 40 cm

Fairy Martins flying over a rocky outcrop near Mount Magnet. Wildflowers, including hot pink Parakeelya and Mulla Mulla. Hand painted and dyed fabric, hand embroidery. Own design.





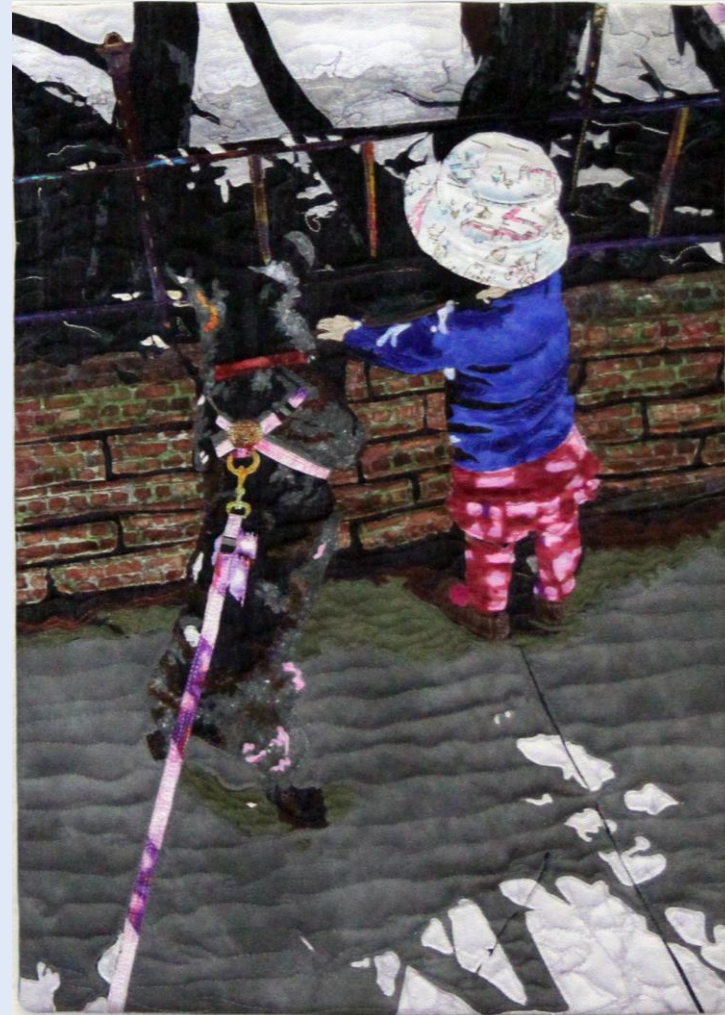
## 1.2 Small Quilts: Professional

**Julie McAllister**

**What's That?**

40 cm x 57 cm

My grand daughter and her little dog Rocket exploring Lake Claremont. Always on the lookout for frogs, crickets or insects! Done in the Photo to Fabric workshop by Phil Thomas.



2.1 Traditional Quilts: Amateur

1<sup>st</sup> place

**Lesley Clugston**

**Colours of Western Australia**

144 cm x 144 cm

Design source, East Meets West  
by Patricia Belyea.



## 2.1 Traditional Quilts: Amateur

2<sup>nd</sup> place

**Lauren Pinkster**

**Maling Road**

156 cm x 156 cm

Di Ford Hall mystery Medallion quilt 2014. Pattern from Quiltmania magazine. Fabric provided in 6-stages bi-monthly as pattern released by magazine.



## 2.1 Traditional Quilts: Amateur

3<sup>rd</sup> place

**Helen Sugars Duff**

**Chris's Cranes**

230 cm x 235 cm

Made for my son Chris. Idea started with a jelly roll, some graph paper, moved from the centre out, making it up as we went along.



## 2.1 Traditional Quilts: Amateur

**Pam Mees**

**Pink Quilt-as-you-go**

123cm x 150 cm

Using scraps from my stash. Quilt -  
as you-go random strips made  
into squares and joined with black  
sashing.



## 2.1 Traditional Quilts: Amateur

**Helen Sugars Duff**

**Spare Thoughts**

170 cm x 233 cm

My first bargello and first free-motion quilting. Spent weeks wallowing in the colours, what a beautiful place to be.



## 2.2 Traditional Quilts: Professional

1<sup>st</sup> place

**Robyn Fahy**

**Dogwood Daisies**

260 cm x 260 cm

Begun as a quilt for a cousin but changed direction! 100% cotton fabrics. Machine Trapunto. Matilda Wool/Polly wadding. Quilted on hand-guided Gammill. Embellished with Swarovski Cabochon Pearl and Crystals.



## 2.2 Traditional Quilts: Professional

2<sup>nd</sup> place

**Carol Brady**

**Lockdown Quilt**

128 cm x 128 cm

During lock down I made this quilt and then digitized a Corona Virus quilting design to keep as a memory quilt.





## 2.2 Traditional Quilts: Professional

3<sup>rd</sup> place

**Meg Cowey**

**Kyoto Garden**

180 cm x 255 cm

Improv crazy piecing to stash-bust  
my Japanese florals.



## 2.2 Traditional Quilts: Professional

**Debra Costarella**

**It takes a Village**

169 cm x 182 cm

This village was a challenge from the weekend retreat in Narrogin 2019. It takes a village to form family. Quilting groups make a village.



## 2.2 Traditional Quilts: Professional

**Susan Sheath**

**Rondo**

172 cm x 172 cm

Copyright acknowledgement:  
Willyne Hammerstein.

This quilt has been pieced together during our world travels in the last couple of years. It reflects my joy of travel which unfortunately is somewhat curtailed at the moment.



## 2.2 Traditional Quilts: Professional

**Judith Whitaker**

**Striped Lollipop**

130 cm x 172 cm

Quilt as you go using sashing strip method mentioned in August QQ.  
No lumpy seams easy to handle,  
uses any size strips. For  
community quilts



## 2.2 Traditional Quilts: Professional

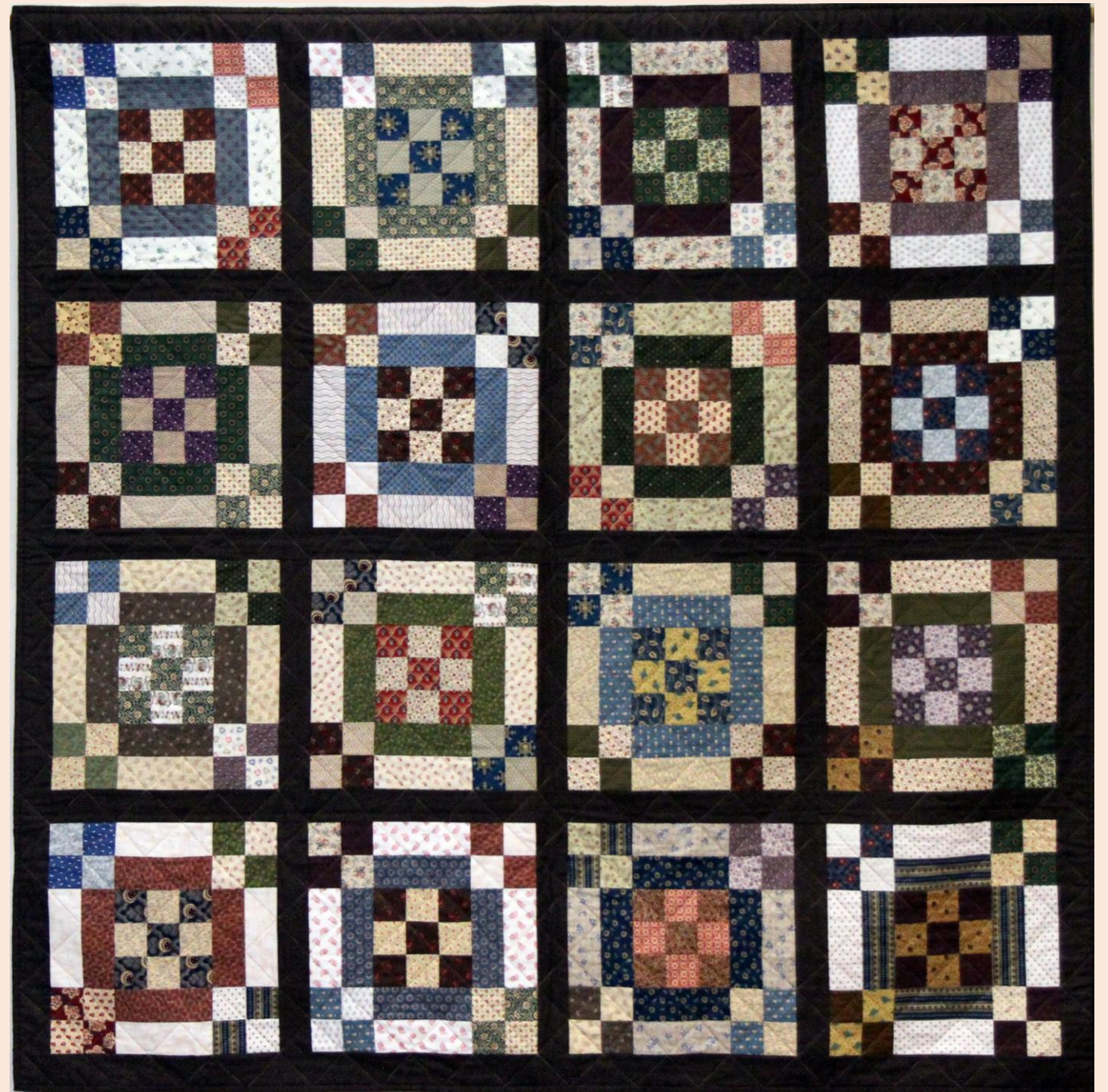
**Judith Whitaker**

**Hugs for Martin**

165 cm x 165 cm

Copyright acknowledgement:  
From Quilts of Love and Valour by  
Becky A. Wright

For brother's 50th birthday. Civil  
war fabrics collected over many  
years



3.2 Mainly Appliqué: Professional

1<sup>st</sup> place

Best hand-quilting award

**Phil Thomas**

**Bowled Over**

137 cm x 208 cm

Blocks my own design or inspired by traditional patterns, plus 2 blocks found in Quiltmania magazine.



### 3.2 Mainly Appliqué: Professional

2<sup>nd</sup> place

**Jan Rowe**

**Up North**

141 cm x 143 cm

This quilt was inspired by a cut-out metal screen at a main intersection in the centre of Darwin. Fabrics were purchased in Darwin and Alice Springs.



### 3.2 Mainly Appliqué: Professional

3<sup>rd</sup> place

**Glenda Olesen**

**Transitions**

132 cm x 174 cm

Australian wild flower fabrics represent our nation when the virus struck. We moved into lockdown in autumn. Swirling leaves are our emotions, confusions as we grapple with new normal.





### 3.2 Mainly Appliqué: Professional

**Catherine Clarke**

**The Fairy Tale Cottages**

65 cm x 92 cm

A beautiful small quilt by Margott Jenek. Row by row of cute houses and aspects of garden.



## 4.1 Modern Quilts: Amateur

1<sup>st</sup> place

**Lesley Clugston**

**Carbon**

150 cm x 150 cm

Diamonds and coal are formed from the same element carbon but the structural arrangements give totally different resources.



## 4.1 Modern Quilts: Amateur

2<sup>nd</sup> place

**Pamela Mees**

**Rainbow Table Cover**

150 cm x 290 cm

This quilt was made with scrap pieces from my stash. Raw edge machine appliqué for the main section, and machine pieced borders added. The whole piece is free-motion quilted.



## 4.2 Modern Quilts: Professional

1<sup>st</sup> place

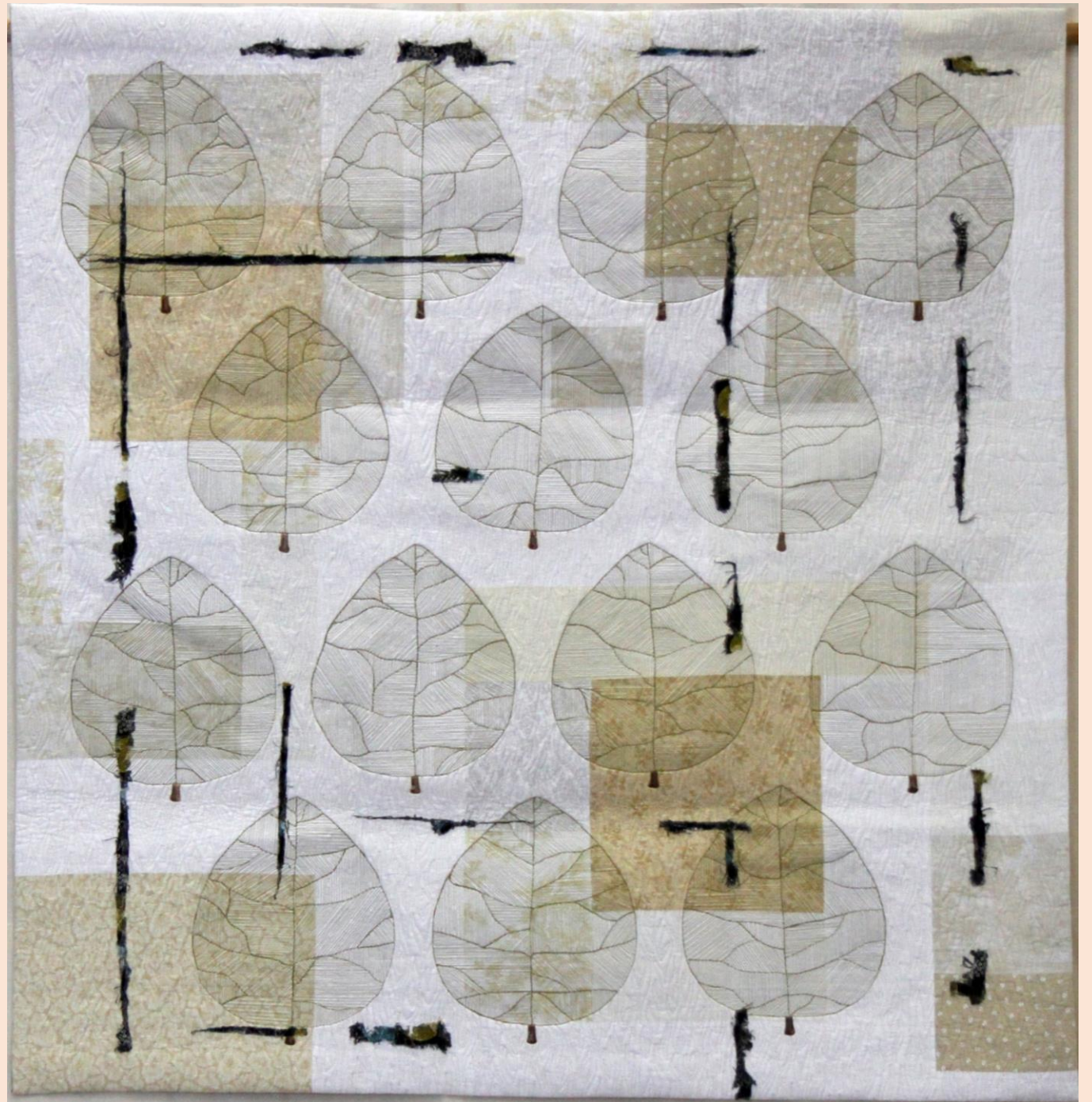
Best long-arm machine quilting  
award

**Tracey Bareli**

**Be Like A Tree**

104 cm x 107 cm

Hand Guided Free Motion  
quilting on HQ Avante. Original  
design.



## 4.2 Modern Quilts: Professional

2<sup>nd</sup> place

**Julie McAllister**

**Visible Light**

112 cm x 175 cm

Copyright acknowledgement:  
Carl de Torres

Californian Graphic designer  
Carl de Torres asked me to  
convert one of his designs into  
a wall hanging for his new  
house. It represents all the light  
in the sun.



## 4.2 Modern Quilts: Professional

3<sup>rd</sup> place

**Elizabeth Humphreys**

**Old Mine Site #One**

102 cm x 102 cm

Created after a visit to an abandoned mine site using simple lines and the complimentary colours of blue and orange. Negative spaces. Machine pieced and quilted. Own design.



## 4.2 Modern Quilts: Professional

**Pat Forster**

**Swell**

153 cm x 153 cm

The title 'Swell' refers to the ocean, but my family also thinks the quilt is swell.



## 4.2 Modern Quilts: Professional

**Pat Forster**

**Crazy Quilt for a Crazy Time -  
COVID 19**

137 cm x 183 cm

Isolation boredom drove me to vibrant, high-contrast colours. Then, I made different configurations of log cabin. Large-scale stippling gave a soft result, and was quick to do!





4.2 Modern Quilts:  
Professional

**Natalia Tasovac**

**A Lot of Bias**

151 cm x 151 cm

Designing the crossing biased lines took a lot of time, and making them a lot more....so a lot of bias seemed an appropriate name for the quilt.



## 4.2 Modern Quilts: Professional

**Natalia Tasovac**

**Green Light**

150 cm x 150 cm

Pink diamonds owe their colour to absorption of green lights while still buried deep within the earth.



5.1 Student Quilts: Junior

1<sup>st</sup> place

**Lily Beer**

**Ladybird, Ladybird Fly Away Home**

80 cm x 80 cm

My colourful autumn leaves came from my school activity. I added a bright ladybird. I love how it can fly away home.



5.1 Student Quilts: Junior

2<sup>nd</sup> place

**Heidi Beer**

**They are Not Flying Geese!**

74 cm x 108 cm

I collect flamingos for my hobby. I thought I would make one for myself as a quilt. I love pink and made a lot of flying flamingos, not flying geese.



5.1 Student Quilts: Junior

3<sup>rd</sup> place

**Katherine (Katie) Jarman**

**The Ocean**

135 cm x 150 cm

Copyright acknowledgement:  
Designed by Elizabeth  
Hartman patterns

Living in Busselton, I love going to the beautiful beaches. My quilt represents the ocean. I love the colours and the way the quilt flows from sand to the sky.



## 5.2 Student Quilts: Senior

1<sup>st</sup> place

**Tilly Fisher**

**Autumn**

22 cm x 22 cm

A challenge with Aunty Lana to learn new techniques, despite living 800 km apart. It is part of a quadtych of the 4 seasons. I made part of Summer too.



## 5.2 Student Quilts: Senior

2<sup>nd</sup> place

**Chloe Buchanan**

**The COVID Blues**

106 cm x 168 cm

This quilt was made over the course of the COVID lockdown and portrays many different shades of blue, white and grey.



## 6.1 Pictorial Quilts: Amateur

1<sup>st</sup> place

Best of Show award

**Judith Wilton**

**Family Boabs**

113 cm x 216 cm

A wedding gift for my nephew, at his request "Kimberley Boabs in aboriginal fabrics". The couple, their 3 young children, and more distant relatives are represented in the landscape.





## 6.1 Pictorial Quilts: Amateur

2<sup>nd</sup> place

**Frances Schifferli**

**The Cost of a Sheep**

150 cm x 190 cm

Five men, including Benjamin Stubbs-Mills, driven by hunger, slew a sheep and were sent to the Swan River Colony. This year is the 170th anniversary of transportation to Western Australia.



6.1 Pictorial Quilts: Amateur

3<sup>rd</sup> place

**Pam Mees**

**Down the Rabbit Hole**

43 cm x 48 cm

Helen Godden design  
available on-line and  
downloaded for class. Painted  
and quilted according to class  
instruction by Helen Godden.  
My first attempt at fabric  
painting.



6.1 Pictorial Quilts: Amateur

First time entrant award

**Helen Dagleish**

**Natasha and Annabelle**

100 cm x 72 cm

My two granddaughters,  
Natasha and Annabelle, aged  
2 years.



## 6.2 Pictorial Quilts: Professional

1<sup>st</sup> place

Best appliqué award

**Phil Thomas**

**Life's Unanswered Questions**

184 cm x 136 cm

Inspired by a photo of my boys standing at the waters edge, mulling over life's unanswered questions.



## 6.2 Pictorial Quilts: Professional

2<sup>nd</sup> place

**Jan Rowe**

**On The Way To Santa Fe**

120 cm x 158 cm

This quilt was inspired by the architecture of adobe buildings in Santa Fe, New Mexico. The vibrant coloured traditional border often decorates artefacts and furnishings.



## 6.2 Pictorial Quilts: Professional

Equal 3<sup>rd</sup> place

**Phil Thomas**

**Empty Street**

117 cm x 69 cm

Inspired in the early weeks of the pandemic by an image of a tourist street in Spain, usually full of tourists but eerily emptied by COVID.



## 6.2 Pictorial Quilts: Professional

Equal 3<sup>rd</sup> place

**Elizabeth Humphreys**

**Southern Stars**

102 cm x 102 cm

A starry nights spent camped out under beautiful clear skies. Graduated hand dyeing. Hand drawn trees, beads, domestic machine quilting. Own design. First of a series.



## 6.2 Pictorial Quilts: Professional

**Meg Cowey**

**The Gap**

80 cm x 40 cm

The impressive granite cliffs seem like an indestructible fortress. Yet one narrow section lost the battle with the ocean tides to create the channel known as The Gap.





## 6.2 Pictorial Quilts: Professional

Lana Lefroy

Memories of Mundabullangana

35 cm x 91 cm

Copyright permission obtained from Australian Museum, Sydney.

Made for my amazing mother, Jean Murray, to capture some of her vast and surprising knowledge and memories from a bye gone era.



## 6.2 Pictorial Quilts: Professional

**Julie McAllister**

**Chorus Line**

188 cm x 136 cm

A fun design to use up my ever increasing pile of scraps. You know the ones that breed in the drawer when you're not looking!



7. Art Quilts: Open

1<sup>st</sup> place

**Tracey Bareli**

**Aborescent**

85 cm x 85 cm

Hand pieced and  
applied. Hand guided  
free-motion quilting on a  
Handi Quilter Avante.  
Original design.



7. Art Quilts: Open

2<sup>nd</sup> place

**Jocelyne Leath**

**Flow**

47 cm x 107 cm

The conditions in the Kimberleys are harsh and unforgiving. The heat, like the tides, is extreme, the rains torrential causing floods. Yet, its incredible beauty is majestic. Includes image transfer.



7. Art Quilts: Open

3<sup>rd</sup> place

**Elizabeth Humphreys**

**Amber and Jet**

152 cm x 152cm

A note in my Grandmothers Diary from 1940. We string them together the Amber and the Jet, days to remember and days to forget. Also applies in 2020.



## 7. Art Quilts: Open

COVID Special Award

**Virginia O'Keeffe**

**Isolate**

126 cm x 143 cm

Made during COVID with a war footing feeling so used older domestic textiles to indicate our locked down status, the regulations and people's responses to the virus.



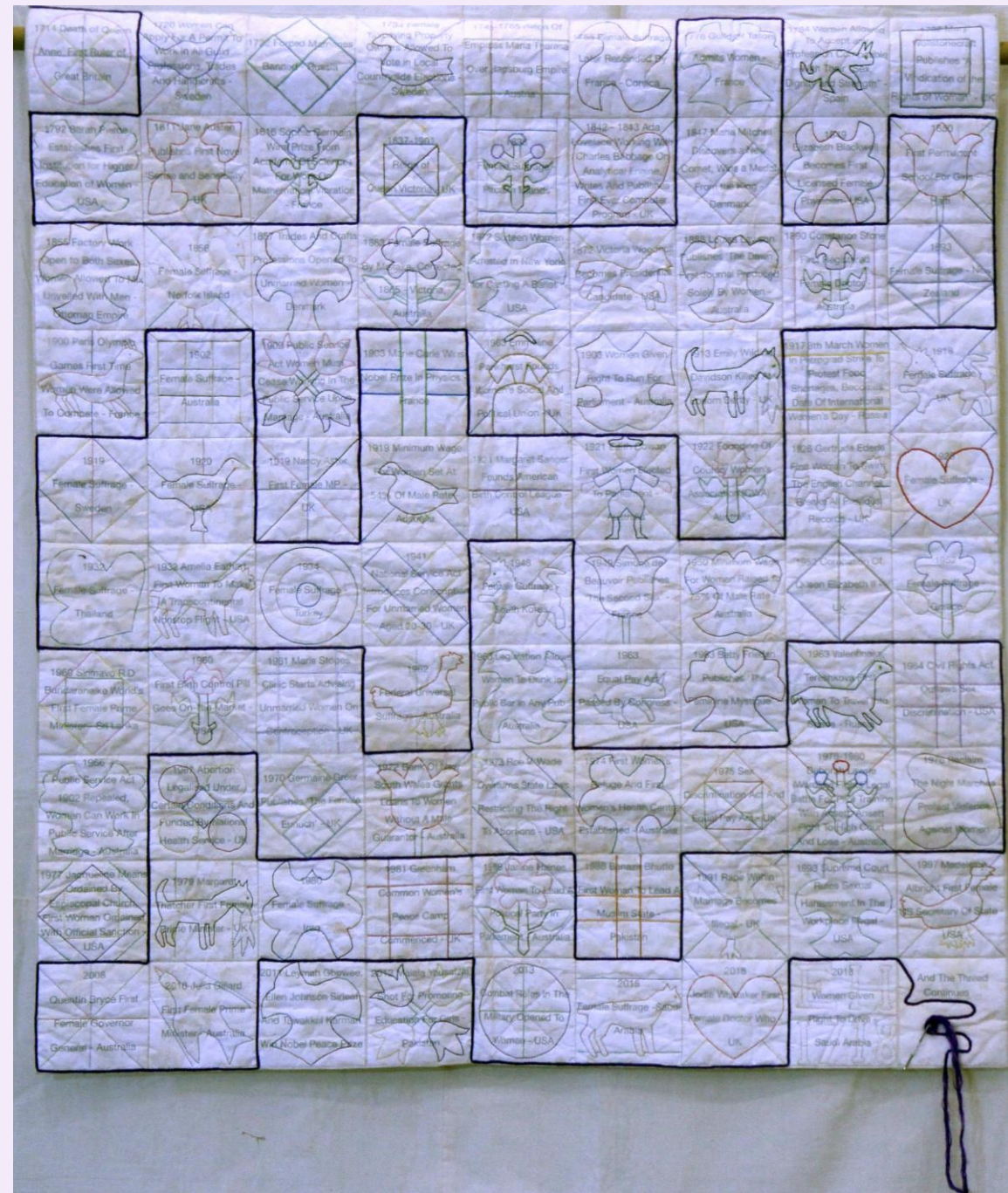
## 7. Art Quilts: Open

**Marilyn Clark-Murphy**

**A 300 Year Thread**

100 cm x 109 cm

We each pick up a thread linking past, present and future. The papers in this quilt track 300 years of women's history, beneath stitched motifs inspired by a 1718 Coverlet.



## 7. Art Quilts: Open

**Jan Fisher**

### **My Sister's Family Tree**

69.5 cm x 135.5 cm

I have sun dyed fabrics with leaves. Each bird depicts a member of my sister's family, with fabrics carefully chosen to represent them. The two birds the same are twins.





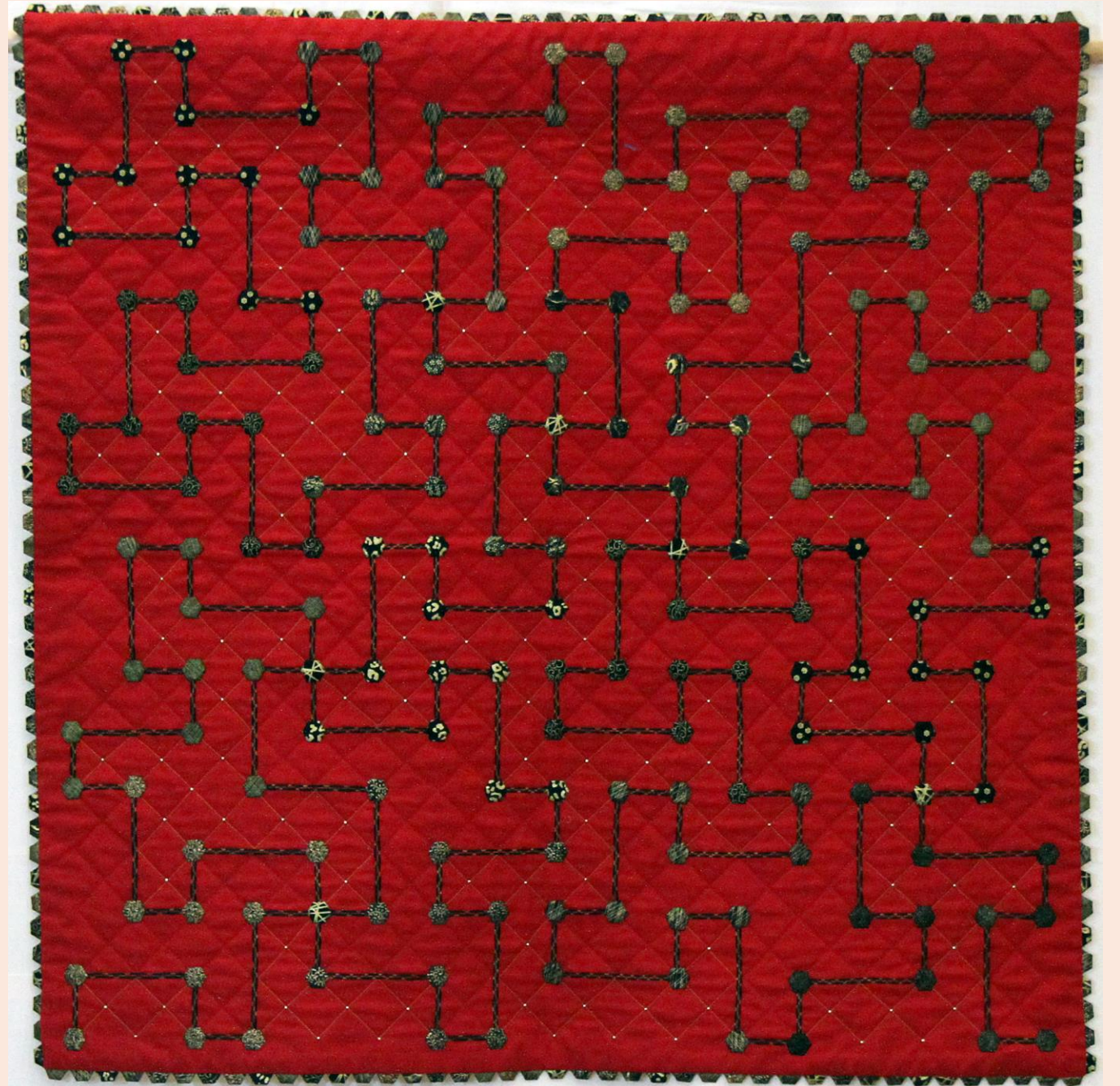
## 7. Art Quilts: Open

**Pat Forster**

**Red Cloth**

101 cm x 101 cm

A decorative table cloth,  
and a puzzle - trace the  
path from bottom left to  
bottom right, traversing  
every segment once only.  
The hexagon fabrics will  
guide you.



## 7. Art Quilts: Open

**Pat Forster**

**Pods**

153 cm x 154 cm

The block shape emerged from reducing, rotating and nesting Drunkards Path blocks. The overall design came from play! The title of the quilt is a natural!



## 7. Art Quilts: Open

**Lana Lefroy**

**WA Honey Possum**

42 cm x 81 cm

Sun dyed and leaf printed fabrics created by my sister Jan Fisher and given to me for Christmas. Such fun deciding what to do with them.



## 7. Art Quilts: Open

**Denise Mallon**

**Coastline**

51 cm x 51 cm

A return journey in a small aircraft from a trip to the Horizontal Falls in the Kimberley, brought us back to Broome along the coast giving a bird's-eye view.



7. Art Quilts: Open

**Julie McAllister**

**City of Churches**

74 cm x 95 cm

A challenge for our quilt group was to create an original work using a small piece of a Marcia Dorse fabric as inspiration.



7. Art Quilts: Open

**Helen O'Hara**

**Cottage Garden**

64 cm x 98 cm

Deconstructed screen print, block print, hand and machine stitch, hand dye, Inktense pencil, standard and reverse applique, foiling, mono-print, free motion stitch.



## 7. Art Quilts: Open

**Susan Rule**

**Extra Shot, Extra Hot**

59 cm x 81 cm

My quilt reflects how I like my coffee. Thanks to Little Owl, Myaree, for raw materials!



7. Art Quilts: Open

**Helen Sugars Duff**

**Beachcombing**

120 cm x 182 cm

Created during a wonderful week attending Albany summer school with Phil Thomas. Lots of peaceful walks on the beach. Who knew trying to create unstructured would be such a challenge.





7. Art Quilts: Open

**Helen Sugars Duff**

**Barking Mad**

41 cm x 120 cm

I am inspired by all the beautiful trees at Bibra Lake and the different bark. Each intricate and different. I wanted to try and capture it.



## 7. Art Quilts: Open

**Phil Thomas**

**A Room with a View**

70 cm x 107 cm

Inspired by a 6" piece of Marcia Derse fabric. Techniques include mono, screen and gel printing, photo transfer, stamping, hand and sun dyeing etc.



## 8. Two Person Quilts

1<sup>st</sup> place

**Melodie Symes**

**Carol's Postponement Trip**

135 cm x 130 cm

Quilted by Carol Brady

Copyright  
acknowledgement: The  
Quilting Cottage Wendy  
Williams has given approval  
to show.

I began this quilt in a  
Wendy Williams workshop  
and adapted the centre to  
my own liking.



## 8. Two Person Quilts

2<sup>nd</sup> place

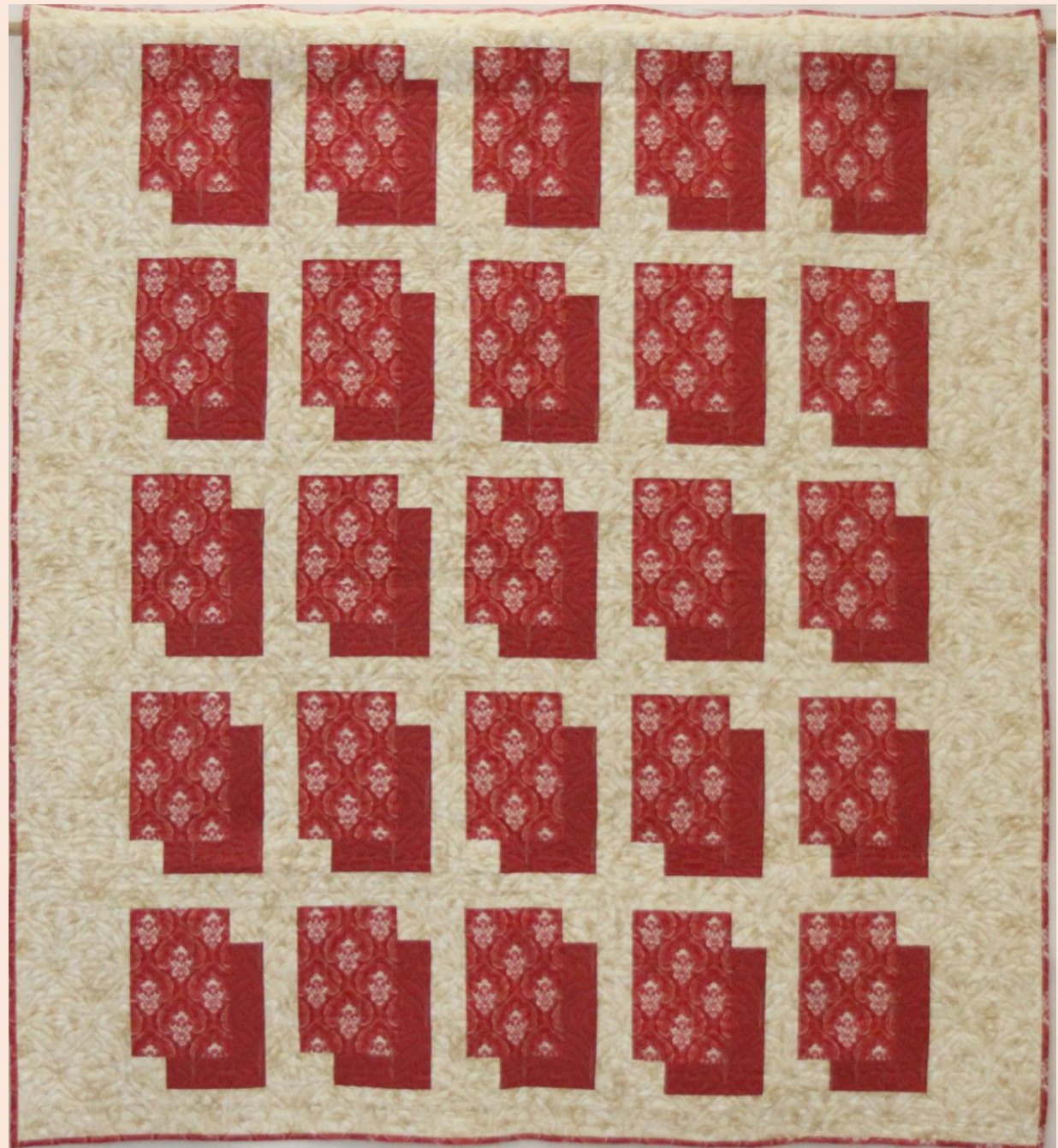
**Jay Gill**

**2020 Red Shadow Box**

156 cm x 172 cm

Quilted by Carol Brady

Carol Brady incorporated an element from the Fabric design into her beautiful quilting.



## 8. Two Person Quilts

3<sup>rd</sup> place

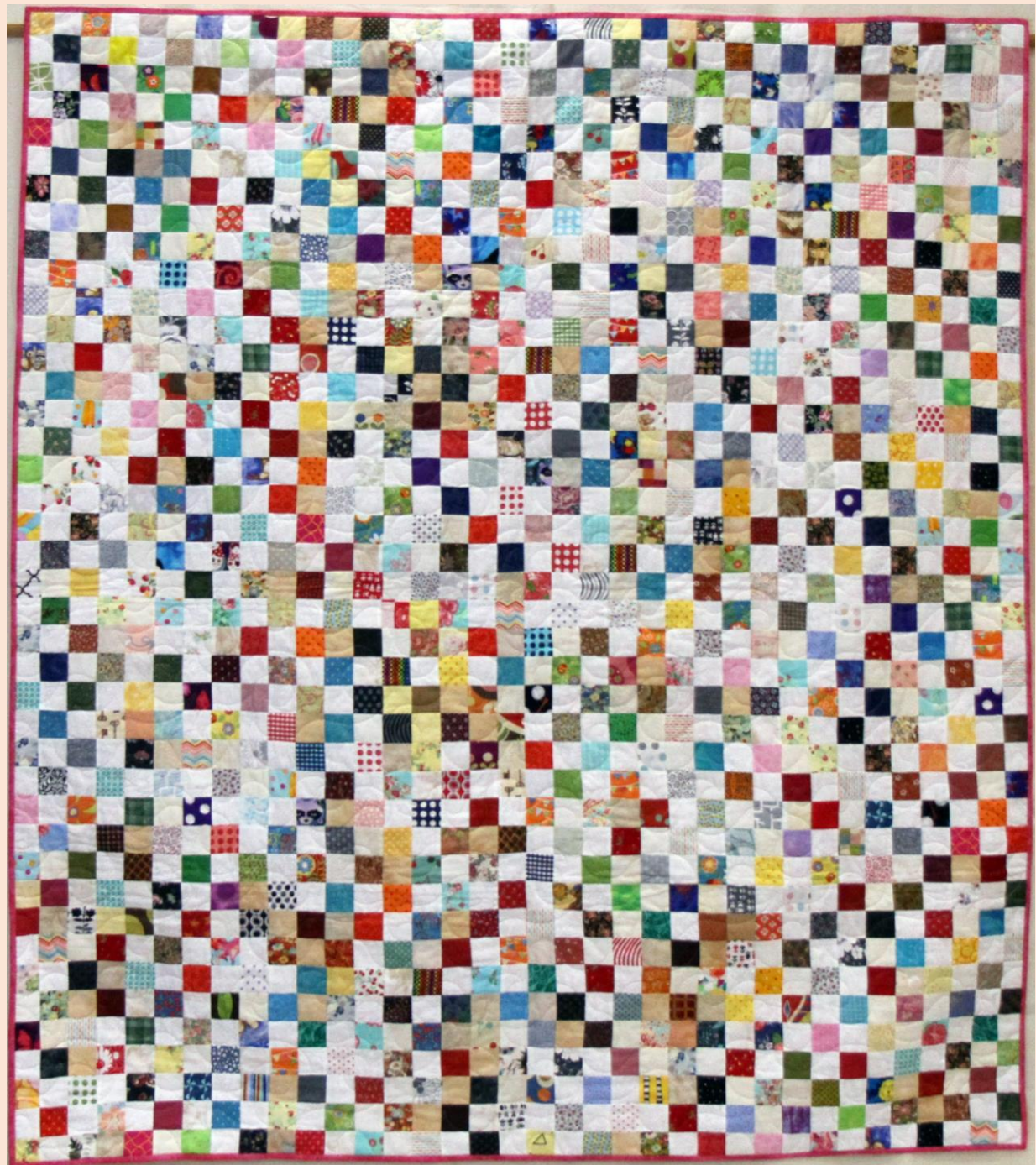
**Miriam Wardle**

**All Sorts**

177 cm x 200 cm

Quilted by Mary Cocciolone

Scrappy quilt made from my stash - bright colours and including ugly ones cut small and white on white.



## 8. Two Person Quilts

**Cathie Gamble**

**Red Japanese**

112 cm x 146 cm

Quilted by Carol Brady

Fun with Japanese Prints by  
enlarging a block from Tula  
Pink's City Sampler book.  
During Lock down.



## 8. Two Person Quilts

**Cathie Gamble**

**Cottage Garden**

116 cm x 162 cm

Quilted by Carol Brady

Trying to use up some of my fabrics from my stash while playing with 1/2 square triangles.

